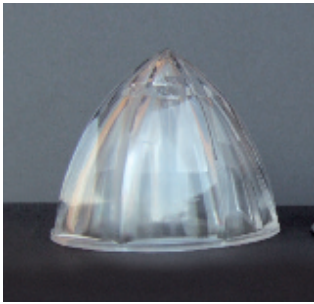
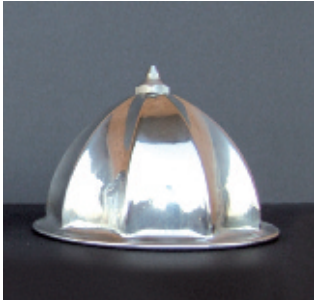


Spremiagrumi industriale SP2062



Pigna in policarbonato
più efficiente per spremere limoni
Polycarbonate cone
better to squeeze lemon



Pigna in acciaio inox
ottima per arance e pompelmi
Stainless steel cone
ideal for oranges and grapefruits

- Spremiagrumi industriale con motore ventilato e sonda termica adatto a grosse produzioni o lavorazione continua

- pigna pigna in policarbonato (SP 2062/E) o in acciaio inox, unificata per limone, arancio e pompelmo

- vasca in acciaio inox completamente estraibile, coperchio in alluminio

CARATTERISTICHE TECNICHE:

Spremiagrumi industriale per uso laboratorio

Corpo in alluminio lucido

Motore ventilato con sonda termica

Pigna in acciaio inox

Setaccio in policarbonato

230V ~ 50/60Hz 450W

Dimensioni cm. 25x25x35h

Peso kg. 10

- Industrial Citrus squeezer equipped with ventilation system and thermal probe in the motor to allow a continuous use

- SP 2062/E with transparent cone, SP 2062 with stainless steel cone, both the cones are combined for lemon, orange and grape fruits

- completely removable stainless steel tanks; aluminium cover

TECHNICAL FEATURES:

Industrial citrus fruit squeezer

Shiny aluminium body

Motor with ventilation system and thermal probe

Stainless steel cone

Polycarbonate strainer

230V ~ 50/60Hz 450W

Overall size cm. 25x25x35h

Weight kg. 10



SP 2062

SP 2062/E